



L'ARCHITRAVE IMMOBILIARE
The key to your home in Italy

VILLA LINDA

Tuscany, Lunigiana, Villafranca in Lunigiana

€ 100,000



Bedrooms: 3

Garage: Yes

Floor Area: 150 SQM

Within 1 hour Of an airport: Yes

Close To amenities

Turn of the century villa, with three bedrooms in Villafranca, a Lunigiana town with services and

train station, in northern Tuscany. The house is in fair condition and in need of some work.

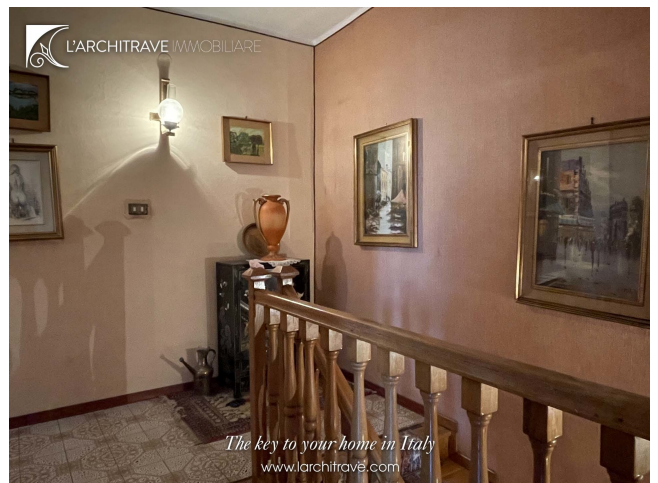
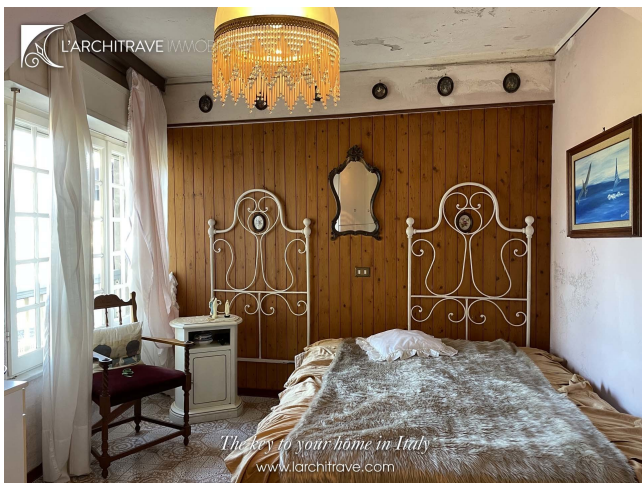
Set on a quiet, ancient piazza in Villafranca, with views to the castle, this lovely home is full of character. On the ground floor the entrance is into a large room (previously a shop), with a door to a large living room. Upstairs is the kitchen/dining room, three good bedrooms and a bathroom with bath. Internal garage and easy car access. Some modernisation is required to revive this home.

This character property is set in the heart of the town of Villafranca in Lunigiana, a town with shops, restaurants and a train station. The old centre has a selection of restaurants and local amenities including banks, supermarkets and a weekly market and just a kilometer away you can visit the delightful town of Filetto where you can meander your way through the entire village and where you will find every street is linked to a stone passage or bridge. Filetto is best enjoyed in the month of August when it opens its doors and to host the annual medieval festival where all the villagers join in dressing up and re-enacting a bygone age.

Set in the heart of Lunigiana, a magical part of Tuscany, with the name meaning the 'Land of the Moon'. The hills that encircle Lunigiana create an intimate and relaxed atmosphere whilst the blend of the mountains and sea are extremely inviting to those who enjoy the outdoors. The rolling landscape is liberally sprinkled with castles of Medici or Malaspina vintage and for lovers of the coast the sea is only half-an-hours' drive away. Lunigiana is special and has been likened to a magical kingdom. It is not only the breath-taking scenery with its abundance of medieval castles but you simply feel a huge sense of wellbeing radiating from the sunshine, glorious countryside, delicious food and wine, kind friendly locals and most importantly, from the sense of tradition and community amongst people here that is rarely seen in modern day life. The golden sandy beaches around Lerici and the pebble coves of the Cinque Terre are ideal for swimming and sailing in the summer and are a short drive away. The area is criss-crossed with marked footpaths for walks to the hills and mountains. The airports of Pisa, Parma and Genova are all just over an hour away.

Distances: Villafranca (with train station) on the doorstep, Aulla 10km, Pontremoli 12 km, Lerici (beaches) 30 km, Cinque Terre 40 km, Lucca 80 km, Pisa (airport) 90 km, Florence 120 km.







L'Architrave Immobiliare Unipersonale srl

Via Montebello 20, Licciana Nardi 54016 Massa Carrara, Tuscany, Italy
(+39) 0187 475543 - info@larchitrove.com