

CASA DEI NONNI

Tuscany, Lunigiana, Comano

€ 75,000



Bedrooms: 2

Terrace Yes

Floor Area: 95 SQM

Within 1 hour Of an airport: Yes

Close To amenities

EPC: 

Set in the town of Comano with shops, restaurants and caffès this property offers an easy lock up place.

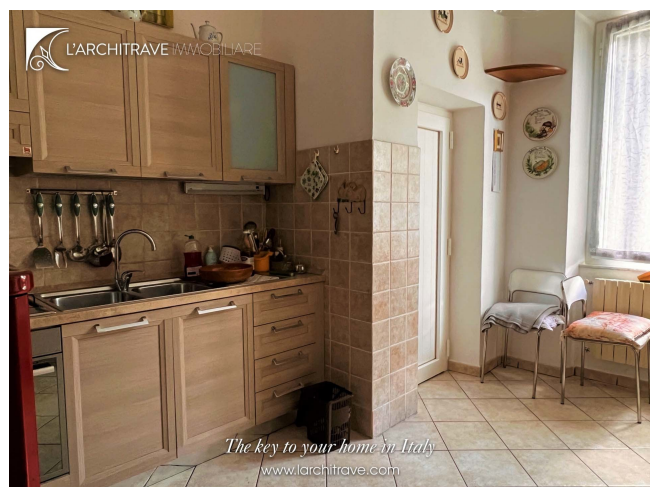
On the ground floor with entrance hall, kitchen opening onto terrace, living room, two bedrooms and bathroom.

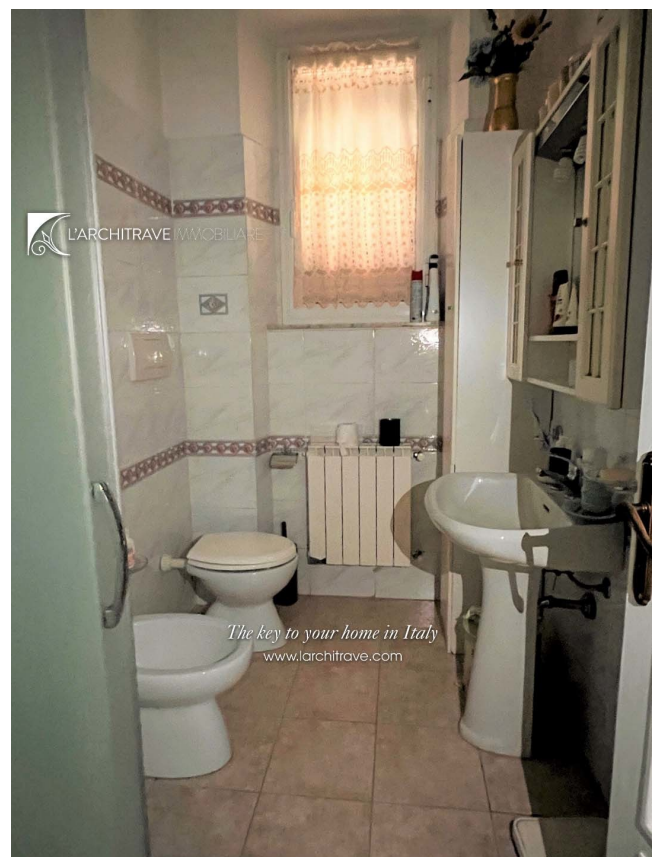
The property is connected to main services .

Set in the centre of Comano with caffès, restaurants and shops. There are tennis courts within walking distance and a footpath from the village that leads through the woods to a crystal clear river with little waterfalls and rock pools. Comano is a town at the head of the Taverone valley with a backdrop of the breathtaking Apennine Mountains and there are many walking trails leading from Comano and the surrounding villages to the hills. The town, which is surrounded by the farming community, hosts an annual horse festival in the summer and offers a good selection of facilities.

Lunigiana is a magical part of Tuscany. The hills which encircle Lunigiana create an intimate and relaxed atmosphere whilst the blend of the mountains and sea are extremely inviting to those who enjoy the outdoors. The rolling landscape is liberally sprinkled with castles of Medici or Malaspina vintage and for lovers of the coast the sea is only half-an-hour away. The golden sandy beaches around Lerici and the pebble coves of the Cinque Terre are ideal for swimming and sailing. The area is criss-crossed with marked footpaths for walks to the hills and mountains. The airports of Pisa, Parma and Genova are all within an hours drive.

Distances: Comano (shops, restaurants, bars) 1 km, Aulla (train & autostrada) 20 km, Lerici (beaches) 40 km, Cinque Terre 60 km, Lucca 100 km, Pisa (airport) 100 km.







L'Architrave Immobiliare Unipersonale srl

Via Montebello 20, Licciana Nardi 54016 Massa Carrara, Tuscany, Italy
(+39) 0187 475543 - info@larchitrove.com