

# CASA DI DANTE

Tuscany, Lunigiana, Mulazzo

**€ 148,000**



**Bedrooms:** 3

**Land:** 2190 SQM

**Floor Area:** 195 SQM

**Within 1 hour Of an airport:** Yes

**Close To amenities**

**EPC:** 

Cosy stone house set in a pretty village, in an elevated position in the hills in the Mulazzo area of Lunigiana.

On the ground floor are two cantinas for storage. An external staircase leads to a courtyard / terrace (not exclusive) from which you enter the house. Kitchen, living room, dining room and bathroom on the first floor, and 3 bedrooms on the second floor. Also from the courtyard there is an additional room with a wood-burning oven.

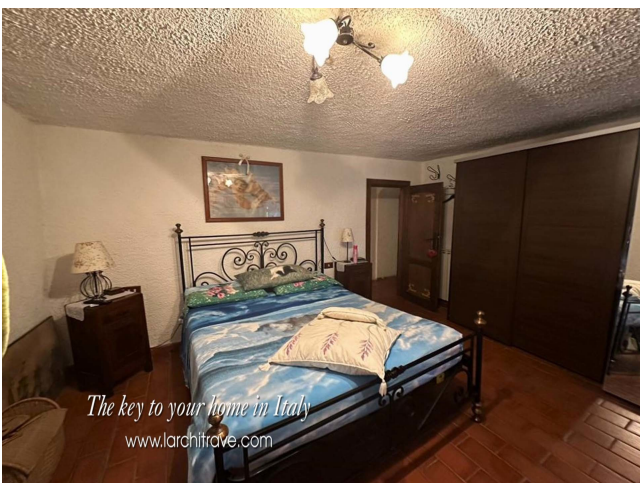
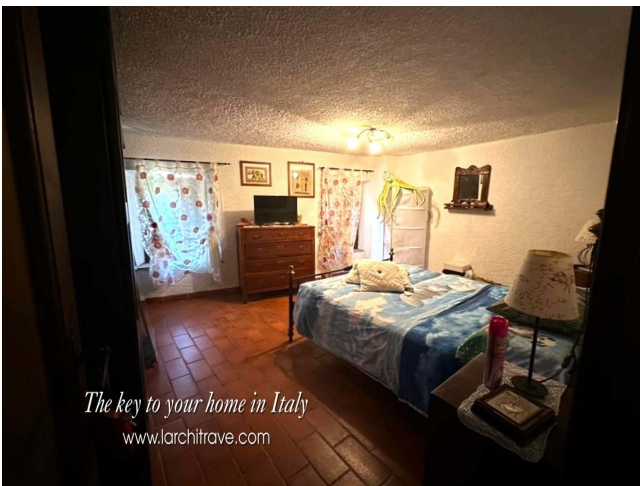
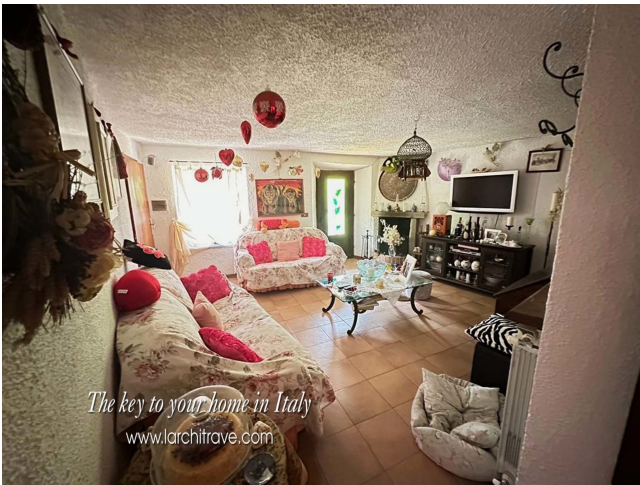
Mulazzo is well known for connections with Dante. It is said that Dante was exiled here and it was here that he wrote the purgatory of the famous 'Divine Comedy'. There are several hill villages set amongst the chestnut groves and streams and rivers that criss-cross the lush green landscape. There is a pizzeria / restaurant in Mulazzo, a wine bar and a friendly café on the piazza. The village also hosts a museum on the life of Dante as well as a book shop. The town of Barbarasco is just a few minutes drive and has a good selection of shops and restaurants as well as cafes, chemist, schools, etc.

Villafranca in Lunigiana, just a few minutes drive away, has shops, restaurants and a train station. The old centre has a selection of restaurants and local amenities including banks, supermarkets and a weekly market and just a kilometer away you can visit the delightful town of Filetto where you can meander your way through the entire village and where you will find every street is linked to a stone passage or bridge. Filetto is best enjoyed in the month of August when it opens its doors and to host the annual medieval festival where all the villagers join in dressing up and re-enacting a bygone age.

Lunigiana is a magical part of Tuscany. The rolling landscape is liberally sprinkled with castles of Medici or Malaspina vintage and for lovers of the coast the sea is only half-an-hours' drive away. The golden sandy beaches around Lerici and the pebble coves of the Cinque Terre (UNESCO World Heritage Site) are ideal for swimming and sailing. The area is criss-crossed with marked footpaths for walks to the hills and mountains. The airports of Pisa, Parma and Genova are all just over an hour away.

Distances: Villafranca 7km (shops and services, train station), Aulla 12km (shops and services, motorway access), Lerici (beaches) 40 km, Cinque Terre 45 km, Parma (airport) 90 km, Pisa (airport) 95 km, Lucca 95 km, Florence 120 km.










---

## L'Architrave Immobiliare Unipersonale srl

Via Montebello 20, Licciana Nardi 54016 Massa Carrara, Tuscany, Italy  
 (+39) 0187 475543 - [info@larchitrave.com](mailto:info@larchitrave.com)