

CASA DI CIMA

Tuscany, Lunigiana, Aulla

€ 120,000



Bedrooms: 2

Garden Yes

Garage: Yes

Floor Area: 150 SQM

Within 1 hour Of an airport: Yes

Close To amenities

EPC: 

Detached house with garden, terrace and superb views to the Apuan mountains.

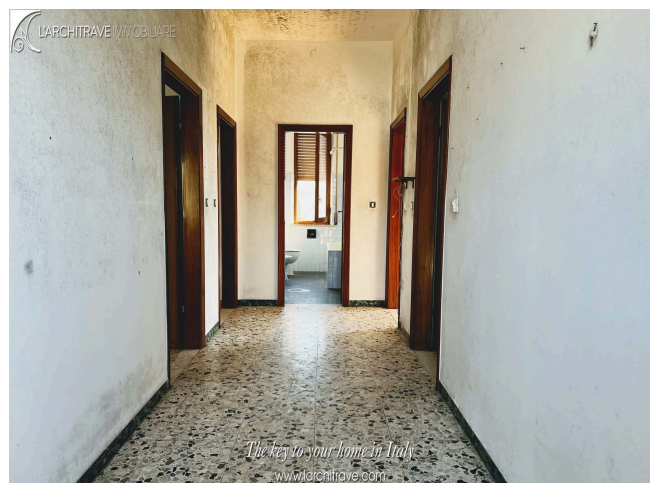
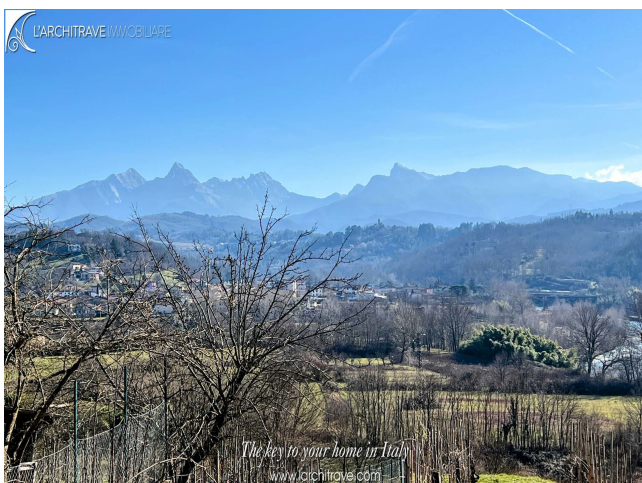
The property requires restoration with kitchen opening onto terrace, living room, two bedrooms and bathroom. The large terrace has lovely views. There is also a spacious attic space. On the ground floor there is a garage and large cantina area. There is a courtyard to the front of the house and garden.

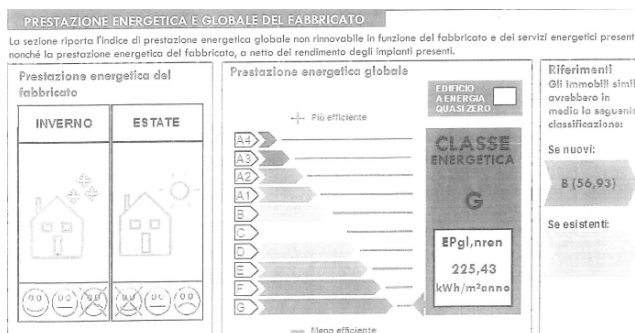
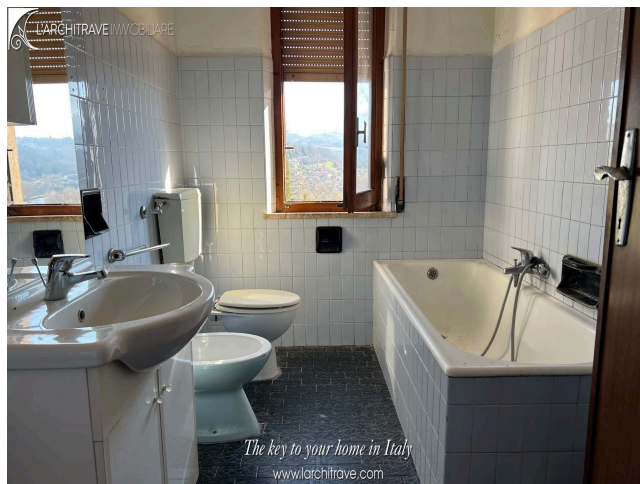
Direct car access along the village lane. The house is set at the edge of a hamlet and easily accessible.

Between Aulla and Fivizzano, medieval market town of Fivizzano and bustling Aulla with supermarkets, shops, motorway and train station. Fivizzano, a medieval walled town with a central cobbled piazza, is often referred to as the Florence of Lunigiana. The bustling town hosts many cultural events over the summer with concerts in the piazza and reenactments of medieval parades. With its musical heritage the town also attracts international musicians during its annual folk music festival. There is a hospital, shops and restaurants in the town. Aulla is the main point of access to the area, with autostrada exit and trains, from where it is easy to reach the Ligurian coastline and all the sights of Tuscany. It is an easy run to Pisa airport, straight down the autostrada.

Lunigiana is a magical part of Tuscany with breath-taking scenery and an abundance of medieval castles. The sunshine, glorious countryside, delicious food and wine, kind and friendly people offer a perfect mix for a summer retreat or for year-round living. The golden sandy beaches around Lerici and the pebble coves of the Cinque Terre are ideal for swimming and sailing. The area is criss-crossed with marked footpaths for walks to the hills and mountains. The airports of Pisa, Parma and Genova are all just over an hour away.

Distances: Aulla (shops, autostrada, trains) 7 km, Fivizzano 10 km, Lerici (beaches) 25 km, Lucca 90 km, Pisa (airport) 90 km, Portofino 100 km, Florence 150 km.





L'Architrave Immobiliare Unipersonale srl

Via Montebello 20, Licciana Nardi 54016 Massa Carrara, Tuscany, Italy
 (+39) 0187 475543 - info@larchitrave.com