

CASA TONINO

Tuscany, Lunigiana, Fivizzano

€ 50,000



Bedrooms: 2

Floor Area: 80 SQM

Within 1 hour Of an airport: Yes

Close To amenities

EPC: 

Sweet stone house set in an ancient and well-preserved village. There is good car access to the village, and ample parking. The property is reached on foot, a short walk through the pretty pedestrian lanes.

The house is entered via an external staircase to the first floor open-plan living / sitting room with kitchen. A bright room with views onto a charming small piazza. Bathroom with bath, and understairs storage. Upstairs are two bedrooms, one with double doors opening onto a balcony. There are some lovely period features including tiled floors, internal wooden shutters, marble window cills, and a marble staircase.

Below are two useful cantinas; one houses the boiler and washing machine as well as providing a good storage area. The other (with separate entrance) is used as a wood store.

Mains services are connected, and Starlink WiFi. Gas central heating.

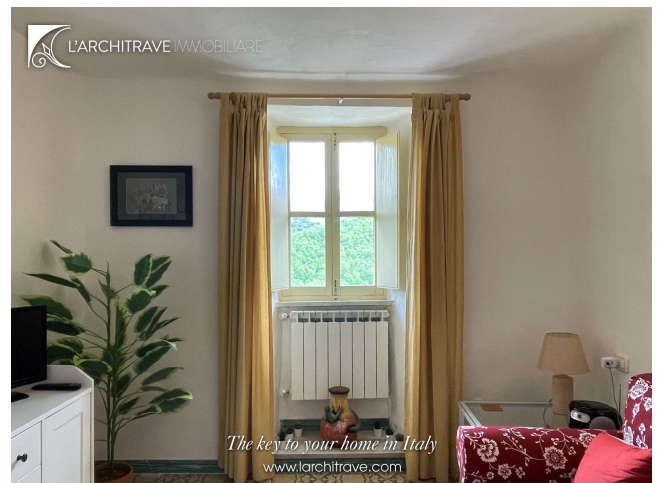
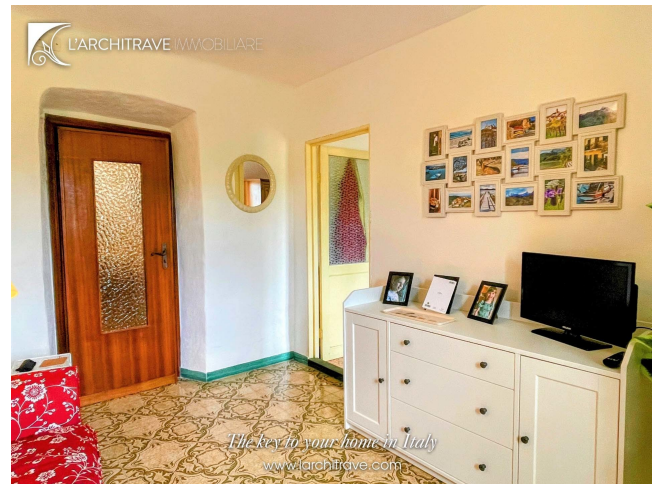
Sold fully furnished, an ideal lock-up-and-leave.

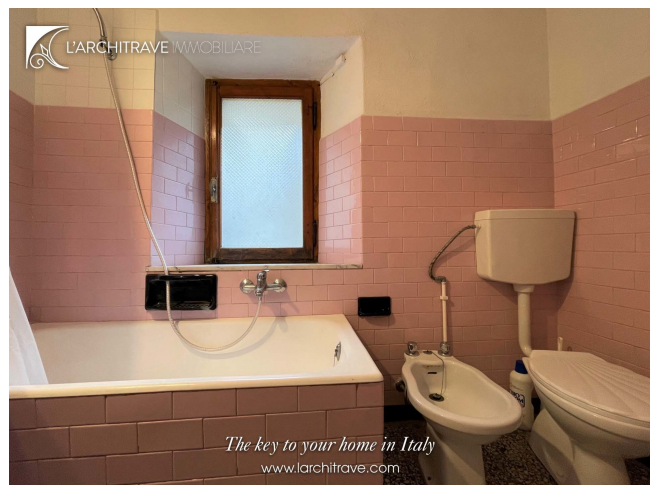
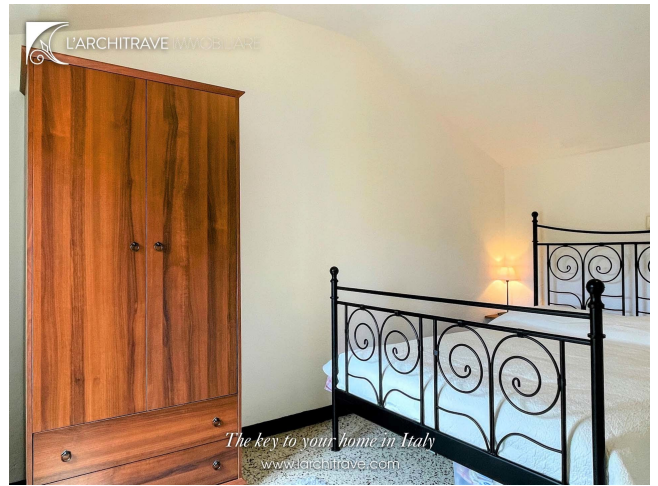
There is a post office and a bar in the village with supermarket shopping and train station 5 km away.

Just 10 mins drive away is the medieval market town of Fivizzano. Fivizzano, a walled town with a central cobbled piazza, hosts many cultural events over the summer with concerts in the piazza and reenactments of medieval parades. With its musical heritage the town also attracts international musicians during its annual folk music festival. There is a hospital, shops and restaurants in the town. Aulla (15km) is the main point of access to the area, with autostrada exit and trains, from where it is easy to reach the Ligurian coastline and all the sights of Tuscany. It is an easy run to Pisa airport, straight down the autostrada.

Lunigiana is a magical part of Tuscany with breath-taking scenery and an abundance of medieval castles. The sunshine, glorious countryside, delicious food and wine, kind and friendly people offer a perfect mix for a summer retreat or for year-round living. The golden sandy beaches around Lerici and the pebble coves of the Cinque Terre are ideal for swimming and sailing. The area is criss-crossed with marked footpaths for walks to the hills and mountains. The airports of Pisa, Parma and Genova are all just over an hour away.

Distances: Aulla (shops, autostrada, trains) 15 km, Fivizzano 6 km, Lerici (beaches) 35 km, Lucca 90 km, Pisa (airport) 95 km, Portofino 100 km, Florence 150 km.





L'Architrave Immobiliare Unipersonale srl

Via Montebello 20, Licciana Nardi 54016 Massa Carrara, Tuscany, Italy
(+39) 0187 475543 - info@larchitrave.com